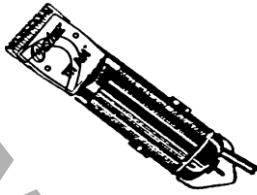




PARTS LIST

"CLASSIC 76" CLIPPER



INSTRUCTIONS	COL. NO.
106349	1

USE ONLY GENUINE OSTER PARTS
USE OF WRONG PARTS MAY BE HAZARDOUS.

NEW MODELS ADDED ⇌ FIRST ISSUE 7/00	COLUMN #:																		
SINGLE SPEED	X																		
BURGUNDY	X																		
120 VOLTS, 45 WATTS, AC	X																		
MODEL OR SERVICE NO. COLUMN →	1	2	3	4	5	6	7	8	9	10	11								

INDEX NO.	PART NUMBER	* WAS PART NO.	DESCRIPTION	Basic Parts	QUANTITY REQUIRED														
1	041664-000-000		Screw- #6-32 X 1/4"	2															
2	105179-000-000		Cover Plate		1														
3	041676-000-000		Oiler	1															
4	042563-000-000		Oil Wick	1															
6	044946-000-000		Lever	1															
7	045515-000-000		Link	1															
8	041723-000-000		Grease Seal	2															
9	055168-005-000		Brush Cap		2														
10	042584-025-000		Brush & Spring Assy	2															
11	042566-000-000		Thrust Plate	1															
12	042881-000-000		Gear	1															
13	057022-005-000		Housing-Burgundy		1														
14	058543-000-000		Washer	1															
15	042575-000-000		Hinge Assy	1															
16	041665-000-000		Screw- #6-32 X 3/8"	2															
17	045588-000-000		Blade Guard- Large	1															
20	042571-000-000		Blade Guide	1															
22	044936-000-000		Socket	1															
25	042555-000-000		Blade Screw- #6-32 X 7/32	2															
26	057070-000-000		Bearing	2															
27	042568-000-000		Washer-Felt	2															
29	058519-000-000		Bearing Retainer	2															
31	042872-000-000		Screw - #6-32 X 1/4	4															
32	084934-005-000		Armature Assy. - 1 Speed		1														
33	084936-005-000		Field Assy - 1 Speed		1														
35	042557-000-000		Locating Ring	1															
36	042559-000-000		Cup	1															
37	042562-000-000		Thrust Spring	1															
38	084175-100-000		Motor End Frame Assy	1															
42	042570-000-000		Retaining Cup	1															
44	104365-000-000		Switch Toggle-1 Spd		1														
46	085042-115-000		End Cap-Burgundy		1														
47	041756-000-000		Lockwasher	2															
48	042574-000-000		Screw - #6-32 X 1 1/8	2															
49	058168-000-000		Switch Nut	1															
50	042614-000-000		Brush Retainer Assy	2															
51	042573-000-000		Bale	1															
52	042551-000-000		Retaining Ring	1															
55	057065-005-000		Cord & Plug Assy	1															
45	084176-025-000		Screen		2														
74	041680-000-000		Grease 1 LB																
62	042564-000-000		Screw- #4-36 X 3/16	2															
75	045558-000-000		Screw- #3-48 X 5/32	2															
76	041738-000-000		Lockwasher	2															
78	105180-000-000		Label-Spec		1														
79	058355-000-000		Terminal Bracket	2															

MANUAL: PROFESSIONAL PRODUCTS
SECTION: CLIPPERS

CONTINUED ON REVERSE SIDE
PAGE: 8C

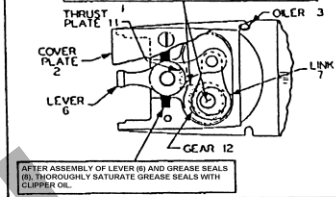
Oster
Professional Products
150 CADILLAC LANE
McMINNVILLE, TN 37110

SEE FRAME B-B, PAGE 2A FOR BLADE SET & TENSION SPRING CHART. BLADE ADJUSTMENT SPECIFICATIONS AND BUSHING & RIVET SET INFORMATION.

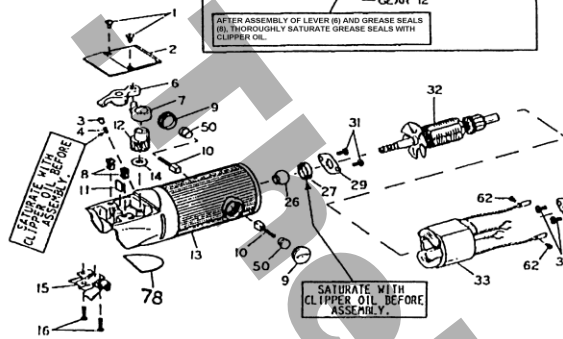
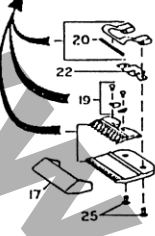
CAUTION: NUMBERS SHOWN ON DRAWING ARE INDEX NUMBERS ONLY. ORDER PARTS BY CORRECT PART NUMBER.

VIEW 2

BEFORE ASSEMBLY OF GEAR (12), FILL GEAR STUD WITH GREASE (79). GREASE MUST SQUIRT OUT OF BOTH HOLES IN STUD AND LEAVE STUD FULL OF GREASE. AFTER ASSEMBLY OF GEAR (12) TO STUD, INJECT APPROXIMATELY 2.5 GRAMS (1/2 TEASPOON) OF GREASE (79) BETWEEN GEAR (12) AND THRUST PLATE (11). A PORTION OF THIS GREASE MUST BE ON CAM AREA OF GEAR (12).



AFTER ASSEMBLY OF LEVER (6) AND GREASE SEALS (8), THOROUGHLY SATURATE GREASE SEALS WITH CLIPPER OIL.



SATURATE WITH CLIPPER OIL BEFORE ASSEMBLY.

SATURATE WITH CLIPPER OIL BEFORE ASSEMBLY.

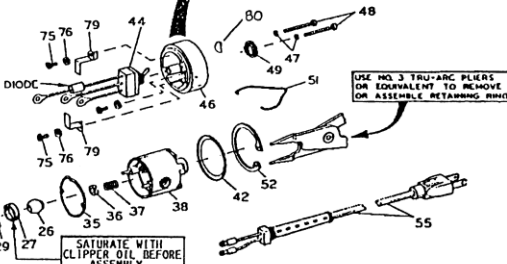
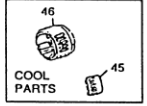
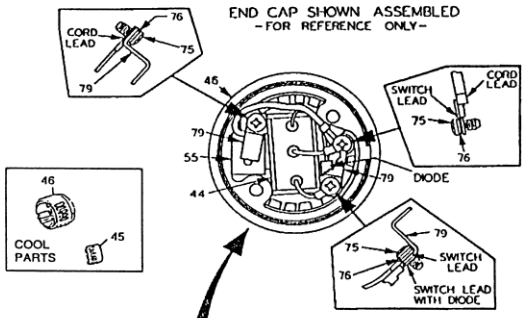
NOTE: VELICAL CAN GEAR (12) WITH SMALL FILE AS SHOWN CAN ONLY BE USED ON THIS MODEL.

NOTE 1: TO INSURE THAT THE CORRECT ARMATURE IS USED WITH THE MODEL, CHECK THE WORM GEAR END OF SHAFT. THERE SHOULD BE TWO START THREADS AROUND END OF SHAFT AS SHOWN.

START THREAD

WORM GEAR END

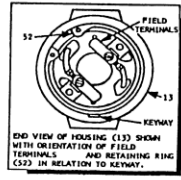
END CAP SHOWN ASSEMBLED - FOR REFERENCE ONLY -



USE NO. 3 TRU-ARC PLIERS OR EQUIVALENT TO REMOVE OR ASSEMBLE RETAINING RING

EXAMPLE: THE COMPONENT PARTS (SMALL INDEX NO.'S) ARE INCLUDED WHEN ORDERING THE ASSEMBLY PART (LARGE INDEX NO.)

28 29 30



END VIEW OF HOUSING (13) SHOWN WITH ORIENTATION OF FIELD TERMINALS AND RETAINING RING (52) IN RELATION TO KEYWAY.